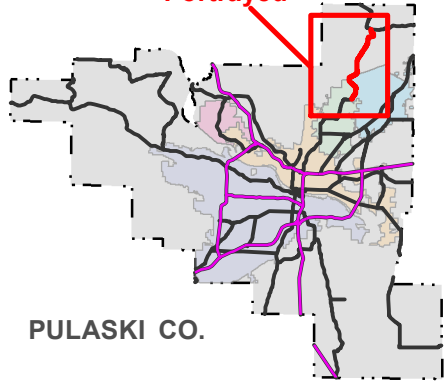
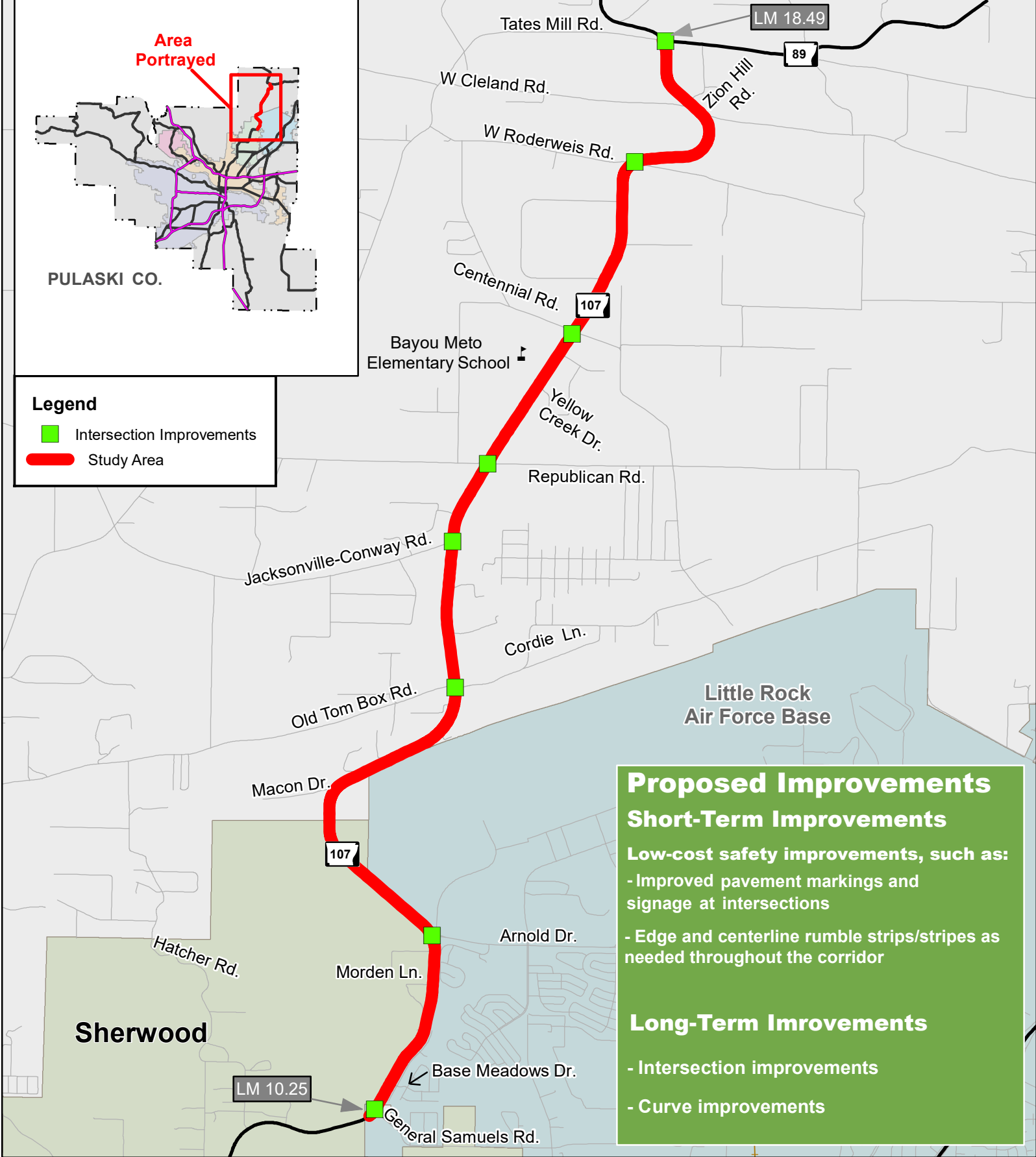


Area Portrayed



Legend

- Intersection Improvements
- Study Area



Proposed Improvements

Short-Term Improvements

Low-cost safety improvements, such as:

- Improved pavement markings and signage at intersections
- Edge and centerline rumble strips/stripes as needed throughout the corridor

Long-Term Improvements

- Intersection improvements
- Curve improvements

Highway 107 Study
Recommended Improvements
Pulaski County



0 0.5 1
Miles